



RFN82
Motor protection
relay

Product designation

Product type designation

General characteristics

Number of poles	Nr.	3
Overvoltage category		III
Pollution degree		3
Frontal IP degree		IP20
Type of release		Thermal
Protection fuse		
	gG (IEC)	A 100
	aM (IEC)	A 50
	K5 (UL)	A 175
Phase failure detection		no
Reset mode		Manual

Power circuit characteristics

Rated insulation voltage U_i IEC/EN	V	690
Rated impulse withstand voltage U_{imp}	kV	8
Rated operational voltage	V	690
Operational frequency	min	Hz 0
	max	Hz 400
Operational current I_e		
	Operational current min	A 35
	Operational current max	A 50
Tripping class		10A
Test Button		yes
Trip indicator		yes

Terminals

type	Yoke clamp
screw	M5
width	9
tool	Phillips 2

Tightening torque for terminals

min	Nm	3.9
max	Nm	3.9
min	lbin	2.88
max	lbin	2.88

Conductor section

AWG/kcmil max	2
---------------	---

Auxiliary circuit characteristics

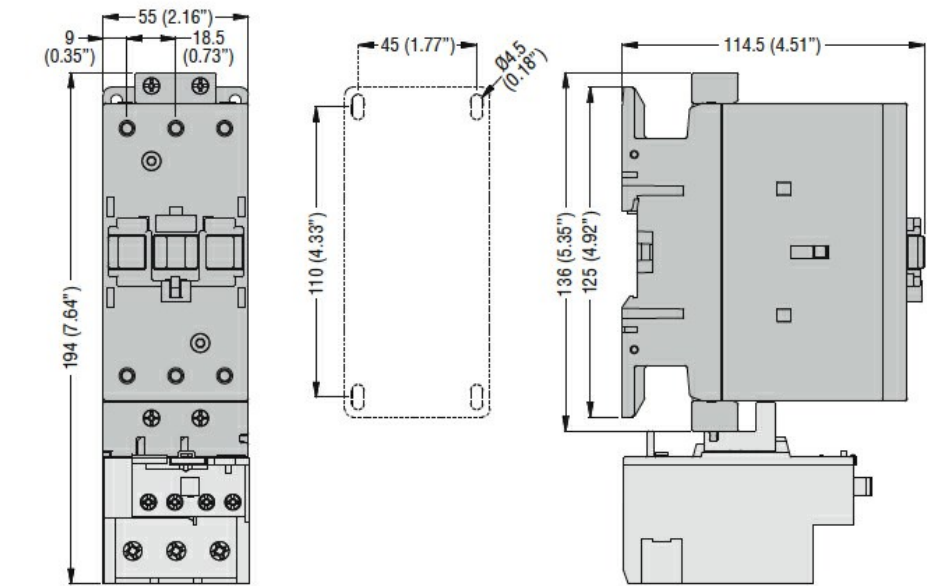
Auxiliary contacts

NO	Nr.	1
NC	Nr.	1

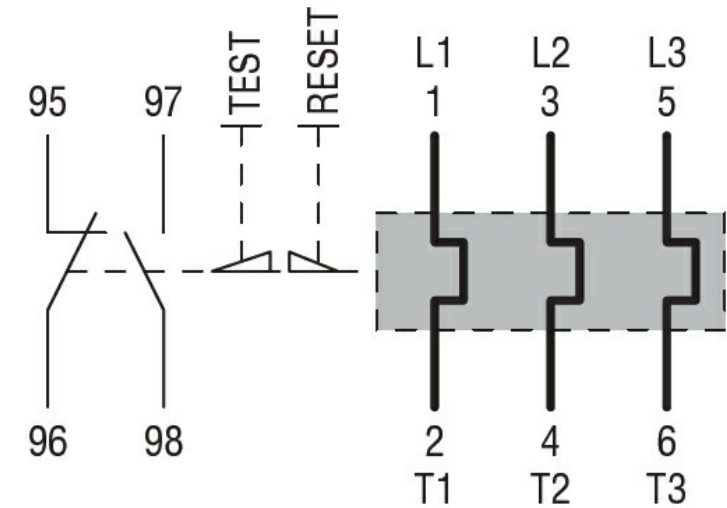
Auxiliary Rated insulation voltage U_i IEC/EN	V	690
-------------------------------------------------	---	-----

Auxiliary Rated impulse withstand voltage Uimp	kV	6
Auxiliary Rated operational voltage	V	690
Operating current AC15		
	24V	A 3
	120V	A 3
	240V	A 1.5
	380V	A 0.95
	480V	A 0.75
	500V	A 0.72
	600V	A 0.6
Operating current DC13		
	125V	A 0.11
	600V	A 0.22
IEC Conventional free air thermal current Ith	A	10
Terminals		
	Auxiliary circuit type	screw and washer
	Auxiliary circuit screw	M3,5
	Auxiliary circuit width	mm 8
	Auxiliary circuit tool	Phillips 1
Conductor section		
	Auxiliary circuit Flexible w/o lug max	mm ² 2.5
	Auxiliary circuit Flexible c/w lug max	mm ² 2.5
Tightening torque for terminals		
	Auxiliary circuit min	Nm 1
	Auxiliary circuit max	Nm 1
	Auxiliary circuit min	lbin 0.74
	Auxiliary circuit max	lbin 0.74
UL/CSA and IEC/EN 60947-5-1 designation		B600-P600
Ambient conditions		
Operating temperature		
	min	°C -20
	max	°C 55
Storage temperature		
	min	°C -55
	max	°C 80
Compensation temperature		
	min	°C -15
	max	°C 55
Max altitude	m	3000
Mechanical features		
Operating position		
	normal allowable	Vertical plan ±30°
Fixing		Direct mounting on BF40... BF94...
Weight	g	365
UL technical data		
Full-load current (FLA) for three-phase AC motor		
	at 480V	A 50
	at 600V	A 50
Dimensions		

Motor protection relay, non phase failure/non single-phase sensitive. Three-pole (three-phase), manual resetting. Direct mounting on BF40 - BF94 contactors, 35...50A



Wiring diagrams



Certifications and compliance

Compliance

CSA C22.2 n° 14
IEC/EN 60947-1
IEC/EN 60947-4-1
UL508

Certifications

cULus

ETIM classification

ETIM 8.0

EC000106 -
Thermal overload
relay