

# ENTES



## ENT Series Low Voltage Current Transformers

ENT Series current transformers are narrow-profile devices to reduce line current to an acceptable level for measuring instruments. They also isolate and protect measuring instruments, relays and other meters from line voltage of an installation.

Series has wound type and bar primary type options according to areas of use. By means of sealable terminal covers, measurement is protected from fraud attempt.

- 5 A and 1 A secondary current options
- Thermal protection Class H (180 °C)
- Sealable secondary terminals (optional)
- Rail mounting for ENT.MN series
- Self-powered, no need auxiliary power supply

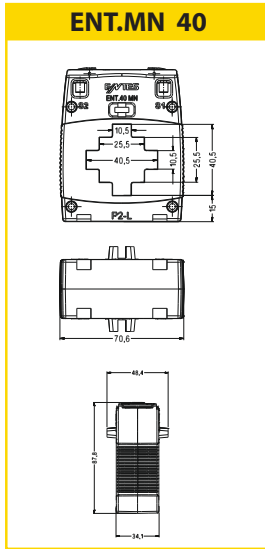
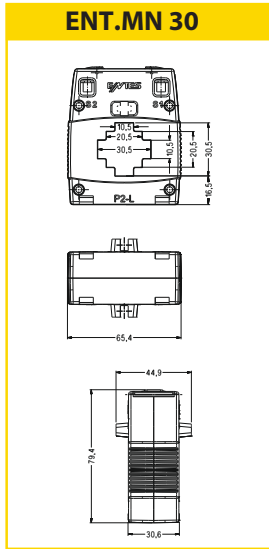
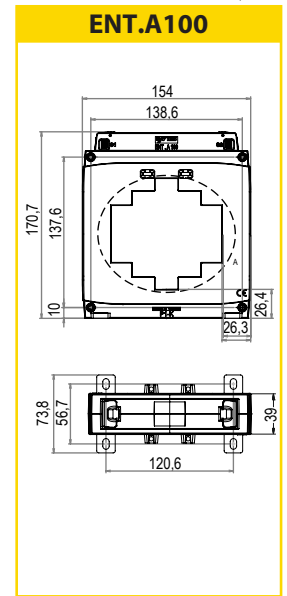
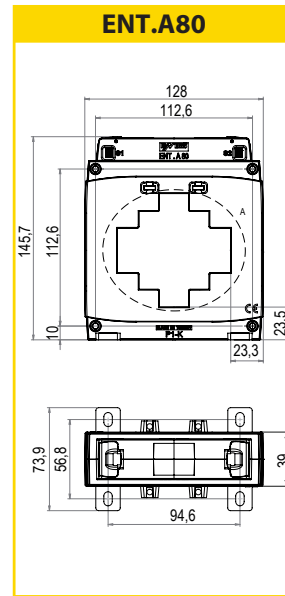
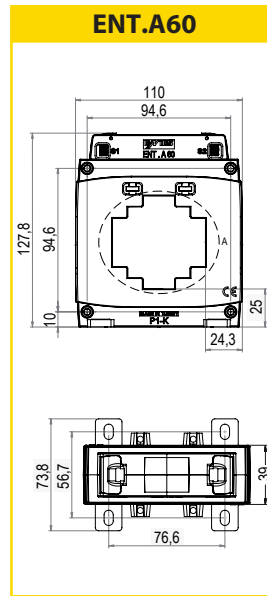


Product Code	Busbar Dimensions (mm)	Primary Current (A)	Nominal Power (VA)						Accuracy Class		Thermal Class
			1,5 VA	2,5 VA	5 VA	10 VA	15 VA	30 VA	0,5	1,0	H
ENT.B	No Hole	5 - 10 - 15 - 20 - 25 - 30 - 40 - 50 - 60 - 75 - 80 - 100 - 125 - 150			•	•	•		•		•
ENT.30	30x10	30 - 40 - 50 - 60 - 75 - 80 - 100 - 125 - 150			•	•	•		•	•	•
		200			•	•	•		•	•	•
ENT.MN 30	30x10	250 - 300			•	•	•		•	•	•
		50 - 60 - 75	•						•	•	•
		80	•	•					•	•	•
		100 - 150	•	•					•	•	•
		200	•	•					•	•	•
ENT.40	40x10	400 - 500 - 600			•	•	•		•	•	
ENT.MN 40	40x10	300 - 400 - 500 - 600		•	•	•		•	•	•	
ENT.60	60x30	750 - 800 - 1000 - 1200 - 1250				•	•		•	•	
ENT.80	80x25	1500 - 1600					•	•		•	
ENT.100	100x50	2000 - 2500 - 3000 - 3200					•	•		•	•
		4000 - 5000						•	•		•

\*Class 0,5 current transformers can be supplied sealed optionally. Please specify this feature during ordering.



General Features	
Nominal Frequency	50 Hz
Insulation Test Voltage	3 kV AC, 1 min
Max. Operating Voltage	0,72 kV AC
Nominal Permanent Thermal Current	1,2 In
Thermal Short-Circuit Current, I <sub>th</sub>	60 x I <sub>n</sub>
Thermal Class	H (180°C)
Overcurrent Factor	n < 5
Type of Enclosure	Self-extinguishing plastic
Secondary Sealable Terminals	Yes
Area of Use	Indoor
Operating Temperature	-5°C ... +40°C
Standards	TS EN 61869-2



## HEADQUARTERS

Address: Dudullu OSB; 1. Cadde; No: 23 34776 Ümraniye - İSTANBUL / TÜRKİYE Tel: +90 216 313 01 10 Fax: +90 216 314 16 15 Sales Fax: +90 216 365 71 71  
E-mail: [impex@entes.com.tr](mailto:impex@entes.com.tr) Web: [www.entes.com.tr](http://www.entes.com.tr) E-bulletin membership: [ebulten@entes.com.tr](mailto:ebulten@entes.com.tr) Coordinates: 40,995852 N, 29,178398 E

## INTERNATIONAL BRANCH OFFICES

İSTANBUL : [impex@entes.com.tr](mailto:impex@entes.com.tr) Tel: +90 216 313 01 10 Fax: +90 216 314 16 15  
NETHERLANDS : [info@entes.eu](mailto:info@entes.eu) Tel: +31 412 - 644319  
GREECE : [infohellas@entes.eu](mailto:infohellas@entes.eu) Tel: +30 2310 706999 +30 2310 707296  
GERMANY : [info@enteselektronik.com](mailto:info@enteselektronik.com)

© ENTES Elektronik Cihazlar İmalat ve Ticaret A.Ş.

